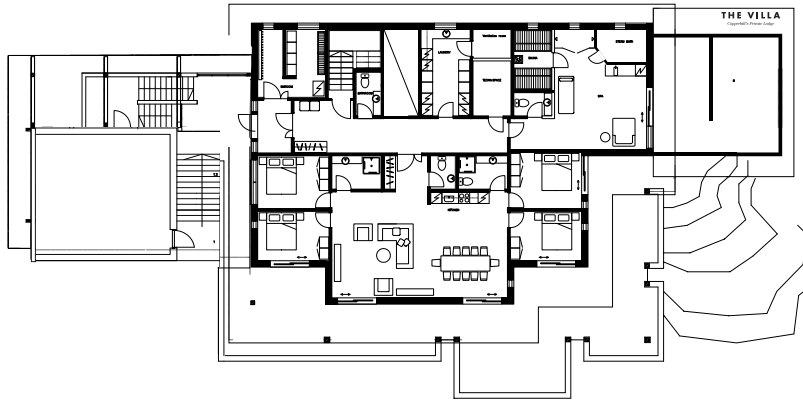


# Floor plan

*and capacity for The Villa*

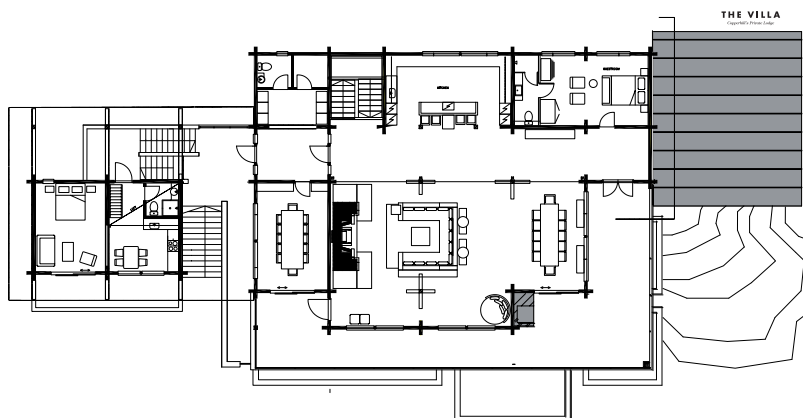


## LEVEL 1

4 bedrooms with double beds, 2 bathrooms and a lounge, dining room and kitchenette. There are also a spa with steam- and regular saunas and a indoor gym

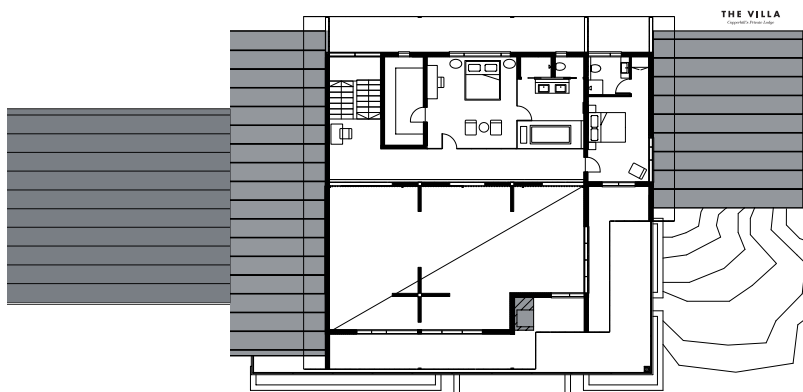
## PARKING

6 outside parking spots with engine heater and 1 parking spot in the garage



## ENTRY LEVEL (LEVEL 2)

Bedroom with bath. Fully equipped conference room for 10. A beautiful lounge and dining room with an open fireplace, sofa area and dinner table for 14. A open kitchen facing the lounge and a separate guest apartment with its own entry, bedroom (2 beds plus 2 on a small loft), bathroom and kitchen



## LEVEL 3

1 master bedroom with a bathroom and a dressingroom and 1 bedroom with a bathroom

